



SYSTEM INTEGRATION



ISO
9001:2015

RINA

CISQ is a member of
IONet
www.ionet-certification.com

ISO 9001:2015

SERTİFİKA NO: 40202/20/AN
CERTIFICATE No.

BU BELGE İLE AŞAĞIDA ADI YAZILI OLAN ŞİRKETİN UYGULAMAKTA OLDUĞU KALİTE YÖNETİM SİSTEMİNİN
IT IS HEREBY CERTIFIED THAT THE QUALITY MANAGEMENT SYSTEM OF

BULUTLU MAKİNE SAN. VE DİŞ TİC. A.Ş.

İSTANBUL END. VE TİC. SERBEST BLG. 9. SOKAK, NO:2/201 34953 TUZLA, İSTANBUL, TURKEY

AŞAĞIDAKİ FAALİYET ADRESLERİNDE / IN THE FOLLOWING OPERATIONAL UNITS

İSTANBUL END. VE TİC. SERBEST BLG. 9. SOKAK, NO:2/201 34953 TUZLA, İSTANBUL, TURKEY

AŞAĞIDA BELİRTİLEN STANDARDA UYGUNLUĞU ONAYLANMAKTADIR
IS IN COMPLIANCE WITH THE STANDARD

ISO 9001:2015

ÜRÜN ÇEŞİTLERİ – PROSESLER – HİZMETLER / FOR THE FOLLOWING FIELD(S)

GEMİ ENTEGRE ELEKTRİK PANO, KONSOL, OTOMASYON, SEVİK KONTROL SİSTEMLERİ, E-SİSTEMLERİ, BATERİ VE GÜÇ YÖNETİM SİSTEMLERİ TASARIM, ÜRETİM, MONTAJ VE SERVİSLERİ, GEMİ VE DENİZLİK SEKTÖRÜ İLE İLGİLİ HER TÜRLÜ TEKNİK EKİPMAN PARÇALARIN ÜRETİMİ, ALIMI – SATIMI YAPMAK VE SERVİS HİZMETİ SUNMAK

DESIGN, MANUFACTURING, ASSEMBLY AND AFTER SALES SERVICES OF INTEGRATED SHIP ELECTRIC SYSTEMS, CONSOLES, AUTOMATION, PROPULSION CONTROL SYSTEM, ELECTRIC PROP BATTERY POWER MANAGEMENT SYSTEMS, SALES AND PURCHASING OF ALL KINDS OF MACHINES, OTHER TECHNICAL EQUIPMENT RELATED TO SHIPS AND SHIPPING

Bu belgenin geçerliliği, uygulanan sistemin yönetimin sürdürülmesiyle ayni şekilde değerlendirilmeye ve üç yılda bir sistemin taranmasıyla bağlıdır.
The validity of this certificate is dependent on an annual / six monthly audit and on a complete review, every three years, of the system.
Bu sertifikasyon kullanımı ve geçerliliği, RINA'nın Yönetim Sistemi Belgelendirme Kuralları ile uyumlu olarak değerlendirilmeye bağlıdır.
The use and validity of this certificate is subject to compliance with the RINA document: Rules for the Certification of Quality Management Systems

Veriliş tarihi
First Issue: 20.08.2020

Sürerinin bitiş tarihi
Expiry Date: 19.08.2023

Revizyon tarihi
Revision date: 20.08.2020

Eda Yurdakul
Turkey Certification Head

RINA Services
Via Corsica 12 - 16121

IAF
INTERNATIONAL ASSOCIATION OF CERTIFICATION BODIES

ANAB
ACCREDITED SYSTEMS CERTIFICATION BODY

ISO
14001:2015

RINA

CISQ is a member of
IONet
www.ionet-certification.com

ISO 14001:2015

SERTİFİKA NO: EMS-8214/AN
CERTIFICATE No.

BU BELGE İLE AŞAĞIDA ADI YAZILI OLAN ŞİRKETİN UYGULAMAKTA OLDUĞU ÇEVRE YÖNETİM SİSTEMİNİN
IT IS HEREBY CERTIFIED THAT THE ENVIRONMENTAL MANAGEMENT SYSTEM OF

BULUTLU MAKİNE SAN. VE DİŞ TİC. A.Ş.

İSTANBUL END. VE TİC. SERBEST BLG. 9. SOKAK, NO:2/201 34953 TUZLA, İSTANBUL, TURKEY

AŞAĞIDAKİ FAALİYET ADRESLERİNDE / IN THE FOLLOWING OPERATIONAL UNITS

İSTANBUL END. VE TİC. SERBEST BLG. 9. SOKAK, NO:2/201 34953 TUZLA, İSTANBUL, TURKEY

AŞAĞIDA BELİRTİLEN STANDARDA UYGUNLUĞU ONAYLANMAKTADIR
IS IN COMPLIANCE WITH THE STANDARD

ISO 14001:2015

ÜRÜN ÇEŞİTLERİ – PROSESLER – HİZMETLER / FOR THE FOLLOWING FIELD(S)

GEMİ ENTEGRE ELEKTRİK PANO, KONSOL, OTOMASYON, SEVİK KONTROL SİSTEMLERİ, E-SİSTEMLERİ, BATERİ VE GÜÇ YÖNETİM SİSTEMLERİ TASARIM, ÜRETİM, MONTAJ VE SERVİSLERİ, GEMİ VE DENİZLİK SEKTÖRÜ İLE İLGİLİ HER TÜRLÜ TEKNİK EKİPMAN PARÇALARIN ÜRETİMİ, ALIMI – SATIMI YAPMAK VE SERVİS HİZMETİ SUNMAK

DESIGN, MANUFACTURING, ASSEMBLY AND AFTER SALES SERVICES OF INTEGRATED SHIP ELECTRIC SYSTEMS, CONSOLES, AUTOMATION, PROPULSION CONTROL SYSTEM, ELECTRIC PROP BATTERY POWER MANAGEMENT SYSTEMS, SALES AND PURCHASING OF ALL KINDS OF MACHINES, OTHER TECHNICAL EQUIPMENT RELATED TO SHIPS AND SHIPPING

Bu belgenin geçerliliği, uygulanan sistemin yönetimin sürdürülmesiyle ayni şekilde değerlendirilmeye ve üç yılda bir sistemin taranmasıyla bağlıdır.
The validity of this certificate is dependent on an annual / six monthly audit and on a complete review, every three years, of the system.
Bu sertifikasyon kullanımı ve geçerliliği, RINA'nın Yönetim Sistemi Belgelendirme Kuralları ile uyumlu olarak değerlendirilmeye bağlıdır.
The use and validity of this certificate is subject to compliance with the RINA document: Rules for the Certification of Environmental Management Systems

Veriliş tarihi
First Issue: 20.08.2020

Sürerinin bitiş tarihi
Expiry Date: 19.08.2023

Revizyon tarihi
Revision date: 20.08.2020

Eda Yurdakul
Turkey Certification Head

RINA Services
Via Corsica 12 - 16121

IAF
INTERNATIONAL ASSOCIATION OF CERTIFICATION BODIES

ANAB
ACCREDITED SYSTEMS CERTIFICATION BODY

ISO
45001:2018

RINA

CISQ is a member of
IONet
www.ionet-certification.com

ISO 45001:2018

SERTİFİKA NO: OHS-4106
CERTIFICATE No.

BU BELGE İLE AŞAĞIDA ADI YAZILI OLAN ŞİRKETİN UYGULAMAKTA OLDUĞU İŞ SAĞLIĞI VE GÜVENLÜĞÜ YÖNETİM SİSTEMİNİN
IT IS HEREBY CERTIFIED THAT THE OCCUPATIONAL HEALTH AND SAFETY MANAGEMENT SYSTEM OF

BULUTLU MAKİNE SAN. VE DİŞ TİC. A.Ş.

İSTANBUL END. VE TİC. SERBEST BLG. 9. SOKAK, NO:2/201 34953 TUZLA, İSTANBUL, TURKEY

AŞAĞIDAKİ FAALİYET ADRESLERİNDE / IN THE FOLLOWING OPERATIONAL UNITS

İSTANBUL END. VE TİC. SERBEST BLG. 9. SOKAK, NO:2/201 34953 TUZLA, İSTANBUL, TURKEY

AŞAĞIDA BELİRTİLEN STANDARDA UYGUNLUĞU ONAYLANMAKTADIR
IS IN COMPLIANCE WITH THE STANDARD

ISO 45001:2018

ÜRÜN ÇEŞİTLERİ – PROSESLER – HİZMETLER / FOR THE FOLLOWING ACTIVITIES

GEMİ ENTEGRE ELEKTRİK PANO, KONSOL, OTOMASYON, SEVİK KONTROL SİSTEMLERİ, E-TAHRİK KONTROL SİSTEMLERİ, BATERİ VE GÜÇ YÖNETİM SİSTEMLERİ TASARIM, ÜRETİM, MONTAJ VE SATIŞ SONRASI SERVİSLERİ, GEMİ VE DENİZLİK SEKTÖRÜ İLE İLGİLİ HER TÜRLÜ TEKNİK EKİPMAN, MAKİNE VE PARÇALARIN ÜRETİMİ, ALIMI – SATIMI YAPMAK VE SERVİS HİZMETİ SUNMAK

DESIGN, MANUFACTURING, ASSEMBLY AND AFTER SALES SERVICES OF INTEGRATED SHIP ELECTRIC SYSTEMS, CONSOLES, AUTOMATION, PROPULSION CONTROL SYSTEM, ELECTRIC PROPULSION SYSTEMS, BATTERY POWER MANAGEMENT SYSTEMS, SALES AND PURCHASING OF ALL KINDS OF EQUIPMENT, MACHINES, OTHER TECHNICAL EQUIPMENT RELATED TO SHIPS AND SHIPPING INDUSTRY

Bu belgenin geçerliliği, uygulanan sistemin yönetimin sürdürülmesiyle ayni şekilde değerlendirilmeye ve üç yılda bir sistemin taranmasıyla bağlıdır.
The validity of this certificate is dependent on an annual / six monthly audit and on a complete review, every three years, of the management system.

Veriliş tarihi
First Issue: 20.08.2020

Sürerinin bitiş tarihi
Expiry Date: 19.08.2023

Revizyon tarihi
Revision date: 20.08.2020

Eda Yurdakul
Turkey Certification Head

RINA Services S.p.A.
Via Corsica 12 - 16128 Genova Italy

IAF
INTERNATIONAL ASSOCIATION OF CERTIFICATION BODIES

ANAB
ACCREDITED SYSTEMS CERTIFICATION BODY

CISQ
CERTIFICATION SYSTEMS CERTIFICATION BODY

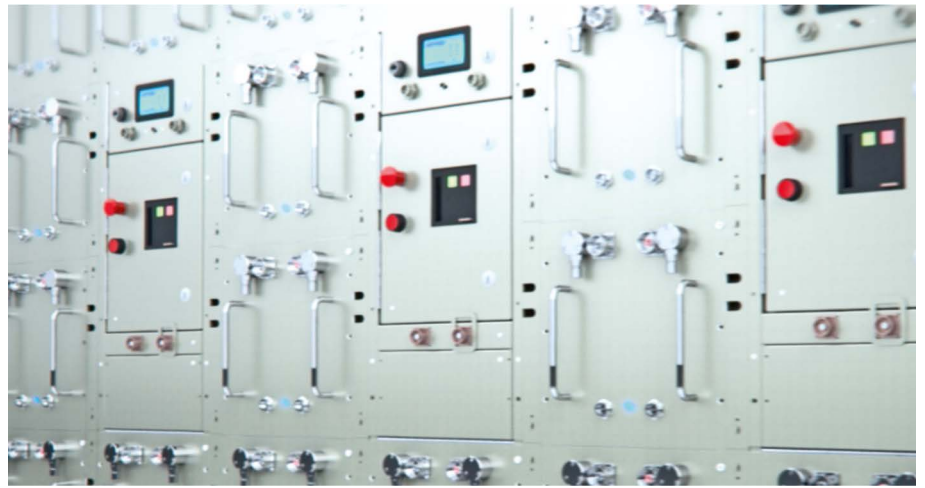


POWER DISTRIBUTION / MAIN SWITCHBOARDS / EMG. SWITCHBOARDS

Bulutlu Marine produces MSB's, ESB's, DB's and MCC's for various marine vessels, ensuring the best safety features, highest quality standards and highest customer satisfaction, witnessed by the respected international classification societies.

Our modular switchboard architecture allows easy application of customized solutions according to customer's requirements.

- Current capacity up to 6300 A
- Short Circuit capacity up to 200 kA
- Up to 690 VAC
- Optional Integrated Ventilation
- Manual / Automatic Synchronization
- Generator Protections



ENERGY STORAGE SOLUTIONS

Bulutlu Marine delivers state of the art Energy Storage Solutions in partnership with SPBES (Sterling Plan-B Energy Solution).

Sterling PlanB Energy Solution provides energy storage solutions to optimize or replace diesel in marine, grid and heavy industrial applications. PlanB batteries have been specifically designed for marine and industrial applications: applications where safety, reliability and cost are the most important aspects of a battery system. PlanB battery systems are used to power hybrid and fully electric ferries, offshore supply vessels, large hybrid yachts, industrial machinery and in land-based grid energy projects.

PlanB energy storage systems power the world's largest electric ferries, workboats and industrial machinery.

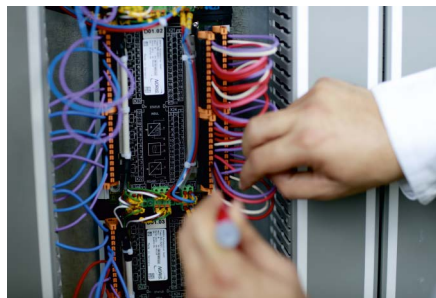
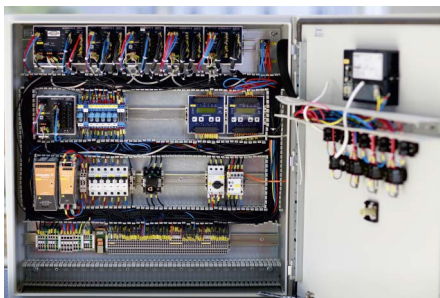


POWER MANAGEMENT SYSTEMS

Bulutlu Marine cooperates with DEIF for power management systems.

DEIF's protection & power management (PPM-3) is a market-leading Power Management System (PMS) standard suitable for a broad range of marine applications with up to 16 diesel generators, two shaft generators, two shore connections, eight bus tie breakers and two emergency/harbor generators including bus tie breaker control and the possibility of wrapped bus-bar applications.

The versatile and fully redundant multi-master system has been developed with fuel-efficient engine operation in view, and is an efficient and cost-effective solution with up to three powerful microprocessors.



INTEGRATED ALARM, MONITORING & CONTROL SYSTEMS

Bulutlu Marine produces NORIMOS Integrated Alarm, Monitoring & Control Systems as well as NORISTAR Propulsion Control Systems in partnership with Noris Automation GmbH.

NORIMOS4 alarm monitoring and control system is based on our NORISYS 4 automation platform for the highest demands on user comfort, availability, flexibility and system availability which is used to monitor and control ship technology, such as machinery and other auxiliary systems.

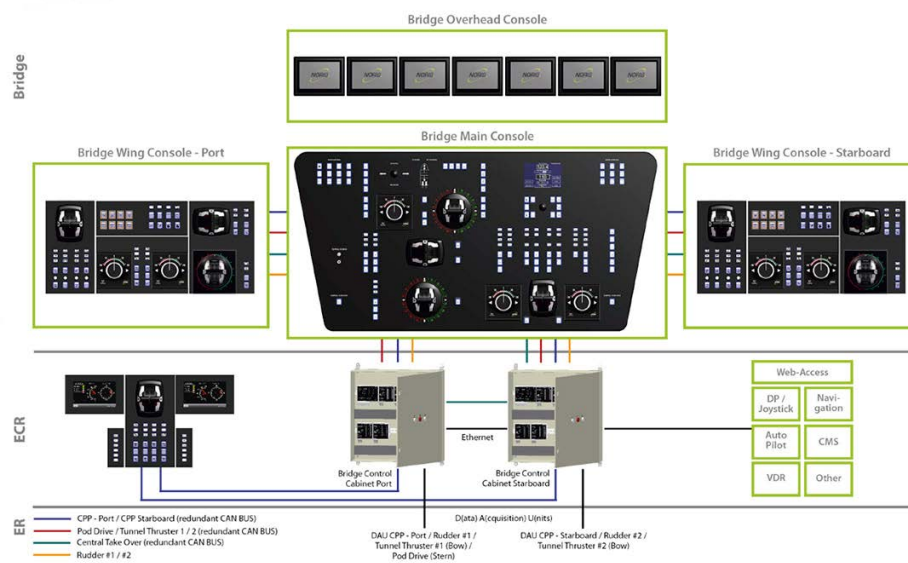
The NORISTAR 4 is our powerful propulsion control system (PCS, RCS Remote Control System) for all types of ship, whether tugboats, cargo ships, passenger ships or super yachts. It is based on our NORISYS 4 open automation platform and is suitable for all propulsion drives.



BRIDGE & CONTROL CONSOLES

Bulutlu Marine produces a large number of customized consoles for various marine applications. Each console is designed according to requirements of customers, taking into account the best ergonomics, space limitations and interfaces.

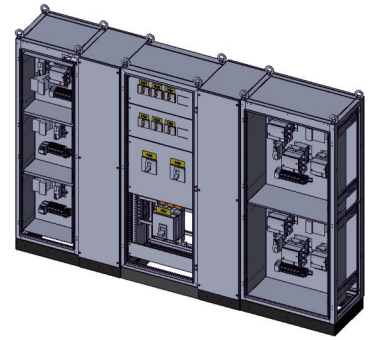
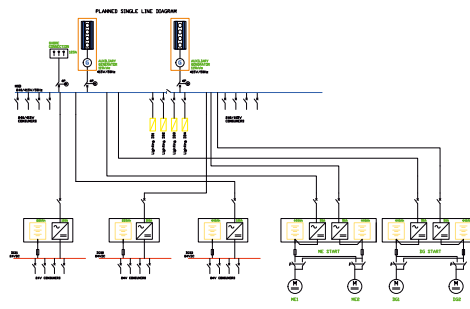
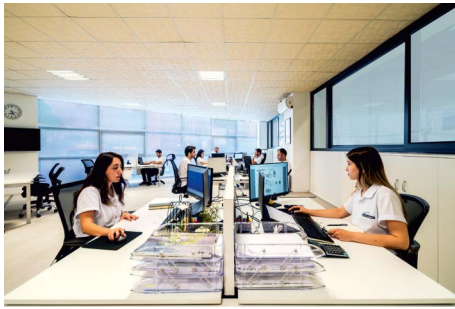
- Bridge Consoles
- Fishing Consoles
- Engine Control Room Consoles
- Cargo Control Room Consoles



INTEGRATED BRIDGE SYSTEMS

Modern, elegant and unique – integrated bridge systems (IBS) and individual bridge design for a uniform look & feel on your bridge.

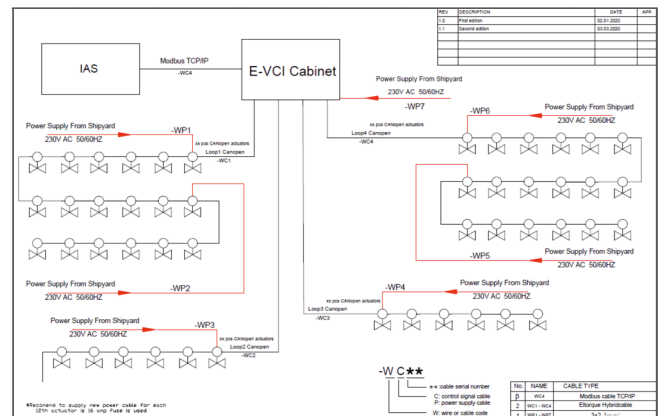
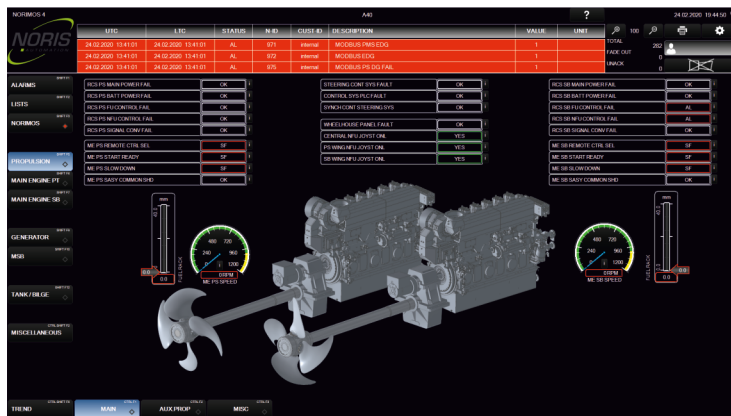
The NORISYS 4 automation platform not only offers components for remote control and monitoring, but also control and display panels for a modern, timeless and uniform bridge design. The modular system provides flexibility and a space-saving, ergonomic design, whilst making your bridge a special and attractive place to be. The automation platform offers all the interfaces you will need to integrate systems from your technology partners (navigation, engine monitoring, lighting, horn control, etc.).



ELECTRICAL SYSTEM DESIGN & SYSTEM INTEGRATION

Bulutlu Marine's experienced team of engineers is capable of carrying out all design steps including load analysis, short-circuit calculations, electrical design as well as mechanical cabinet design, using the best computer tools in the industry.

- Single Line Diagrams
- Schematic Power Distribution
- Cabling & Termination Diagrams
- Electrical Cabinet & Console Schematics
- Lighting Arrangement Plans
- 3-D Mechanical Design
- Short Circuit Calculations
- AC/DC Load Balance
- Battery Calculations
- Insulation Test Reports
- Energy Storage System Integration
- Hybrid & Electric Propulsion Systems



SOFTWARE & AUTOMATION ENGINEERING

Our automation engineers carry out system engineering works, mimic diagram preparations, creation of operational scenarios, PLC programming, serial communication protocols for various applications such as Integrated Alarm, Monitoring and Control Systems, Power Management Systems, Propulsion Control Systems, Pump Control Systems, Valve Control Systems.



ELECTRICAL INSTALLATIONS, COMMISSIONING & AFTERSALES SERVICE

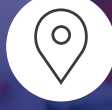
Our experienced team of System Engineers and Technicians carry out any kind of field installations, cable laying, penetrations, terminations, system start-up works, onboard modifications and aftersales services for various newbuilding, retrofit and conversion projects.



PROJECT MANAGEMENT, CONSULTANCY, SUPERVISION

Bulutlu Marine provides project management, consultancy and supervision services for ship owners and shipyards.

Our Supervision & Project Management services ensure compliance with Class Society regulations and Technical Specifications. We provide on-time and high quality project deliveries thanks to our skilled supervision team and strict adherence to contractual responsibilities.



ADDRESS

Bulutlu Makine San. ve Dış Tic. A.Ş.
İstanbul End. ve Tic. Serbest Bölgesi
9. Sokak No: 2 / Z01 34953
Aydınlı - Tuzla / İstanbul



WEB & E-MAIL

info@bulutlumarine.com
sales@bulutlumarine.com

www.bulutlumarine.com



PHONE & FAX

Phone: +90 (216) 446 47 95 - 96
Phone: +90 (216) 510 47 97
Fax: +90 (216) 510 47 96

